

Note that changes in the tables are calculated from more detailed data and may not match changes calculated manually from the figures presented in the text. Unless otherwise stated, all data in the tables and text are in seasonally adjusted terms, while data in the charts are in trend terms.

OVERVIEW

Seasonally adjusted **employment** increased by 14,700 in September, to stand at a record high of 12,944,000. Over the year, employment has risen by 311,600 (or 2.5 per cent). **Full-time employment** rose by 26,200 in September, to a record high of 8,847,200, and is 191,700 (or 2.2 per cent) higher than it was a year ago. **Part-time employment** fell by 11,400 in September, to stand at 4,096,900, but has increased by 119,900 (or 3.0 per cent) over the year. The **unemployment rate** declined by 0.1 percentage points over the month, to 5.2 per cent in September 2019, but is 0.2 percentage points higher than it was in September 2018. The **participation rate** fell by 0.1 percentage points over the month, to 66.1 per cent in September 2019, but is 0.7 percentage points above the 65.4 per cent recorded in September 2018.

Table 1 – Key figures

	Sep-19	Aug-19 to Sep-19		Sep-18 to Sep-19	
		('000)	(%)	('000)	(%)
Employment ('000)	12,944.0	14.7	0.1	311.6	2.5
Full-time ('000)	8,847.2	26.2	0.3	191.7	2.2
Part-time ('000)	4,096.9	-11.4	-0.3	119.9	3.0
Unemployment ('000)	709.6	-8.1	-1.1	43.6	6.6
Unemployment rate (%)	5.2	-	-0.1 pts	-	0.2 pts
Participation rate (%)	66.1	-	-0.1 pts	-	0.7 pts

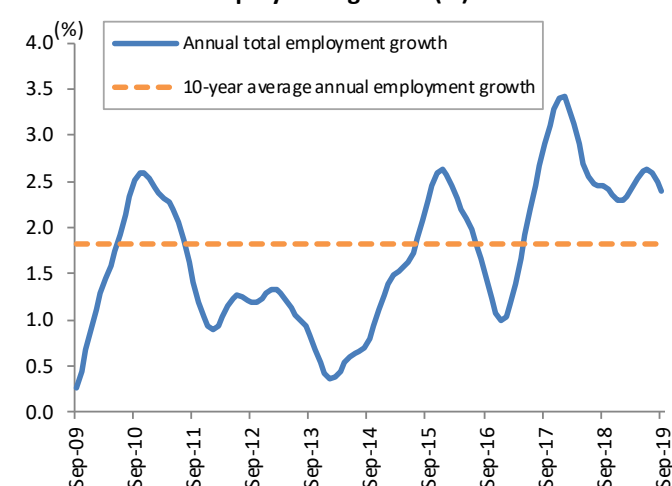
EMPLOYMENT

Table 2 – Employment ('000)

	Sep-19	Change over the month	Change over the year
Persons	12,944.0	0.1%	2.5%
Male	6,831.6	-0.1%	1.7%
Female	6,112.4	0.4%	3.4%

- **Employment** increased by 14,700 in September, to a record high of 12,944,000, and is now 311,600 (or 2.5 per cent) higher than the level recorded a year ago.
- **Full-time employment** rose by 26,200 in September, to stand at a record high of 8,847,200. **Part-time employment** fell by 11,400 in September to stand at 4,096,900.
- Over the last year, **full-time employment** has risen by 191,700 (or 2.2 per cent), while **part-time employment** has increased by 119,900 (or 3.0 per cent).
- Since September 2013, **employment** has risen by 1,467,500 (or 12.8 per cent).
- **Female employment** rose by 21,400 in September, to a record high of 6,112,400, while **male employment** fell over the month, by 6,700, to 6,831,600 in September.

Chart 1 – Annual employment growth (%)



- Over the year, **female employment** has risen by 199,800 (or 3.4 per cent). **Male employment** has also increased over the period, by 111,800 (or 1.7 per cent).

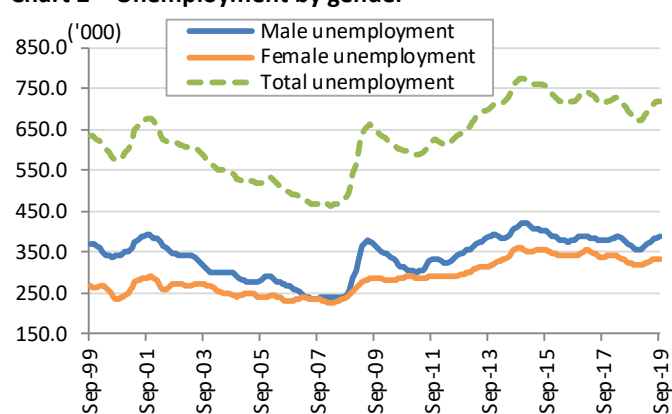
UNEMPLOYMENT

Table 3 – Unemployment ('000)

	Sep-19	Change over the month	Change over the year
Persons	709.6	-1.1%	6.6%
Male	388.7	1.2%	13.8%
Female	320.9	-3.8%	-1.1%

- The level of **unemployment** decreased by 8,100 over the month, to 709,600 in September, but has risen by 43,600 (or 6.6 per cent) over the year.
- **Male unemployment** rose by 4,600 over the month, to 388,700 in September 2019, and is 47,100 (or 13.8 per cent) above the level recorded a year ago.
- **Female unemployment** decreased by 12,800 over the month, to 320,900 in September 2019, and is 3,500 (or 1.1 per cent) below the level recorded a year ago.

Chart 2 – Unemployment by gender



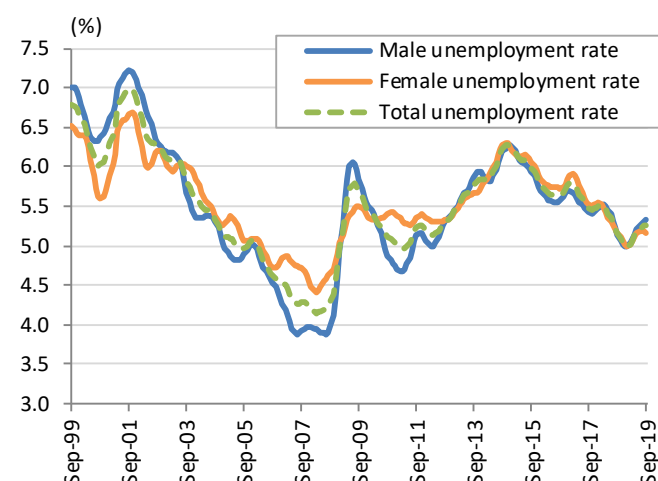
UNEMPLOYMENT RATE

Table 4 – Unemployment rate (%)

	Sep-19	Change over the month	Change over the year
Persons	5.2	-0.1 pts	0.2 pts
Male	5.4	0.1 pts	0.5 pts
Female	5.0	-0.2 pts	-0.2 pts

- The **unemployment rate** decreased by 0.1 percentage points over the month, to 5.2 per cent in September 2019, but remains above the 5.0 per cent recorded a year ago.
- The **male unemployment rate** increased by 0.1 percentage points in September 2019, to 5.4 per cent, and remains above the 4.8 per cent recorded in September 2018.
- The **female unemployment rate** fell by 0.2 percentage points over the month, to 5.0 per cent in September 2019, and is below the 5.2 per cent recorded last year.

Chart 3 – Unemployment rate by gender



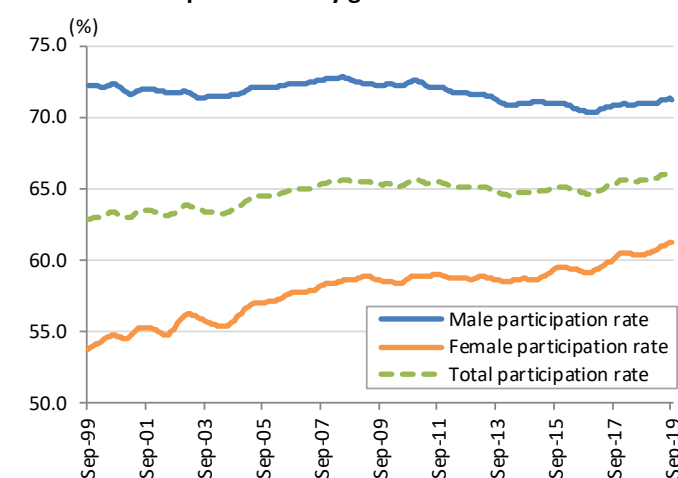
PARTICIPATION RATE

Table 5 – Participation rate (%)

	Sep-19	Change over the month	Change over the year
Persons	66.1	-0.1 pts	0.7 pts
Male	71.2	-0.1 pts	0.4 pts
Female	61.2	0.0 pts	0.9 pts

- The **participation rate** decreased by 0.1 percentage points in September, to 66.1 per cent, but remains above the 65.4 per cent recorded in September 2018.
- The **male participation rate** fell by 0.1 percentage points over the month, to 71.2 per cent in September 2019, but remains above the 70.8 per cent recorded a year ago.
- The **female participation rate** was steady over the month, at an equal record high of 61.2 per cent in September 2019, and remains above the 60.3 per cent recorded in September 2018.

Chart 4 – Participation rate by gender



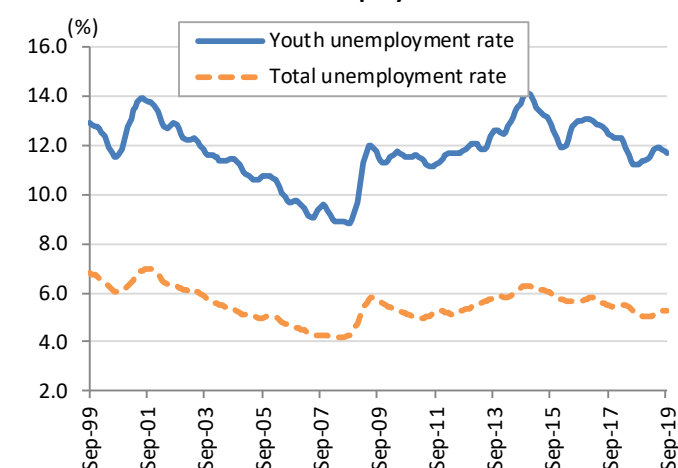
YOUTH (15-24 YEARS)

Table 6 – Key youth labour market indicators

	Sep-19	Change over the month	Change over the year
Youth employment ('000)	1,957.7	-0.2%	1.0%
Youth unemployment ('000)	258.8	-0.2%	3.6%
Youth unemployment rate (%)	11.7	0.0 pts	0.3 pts

- **Youth employment** fell by 4,300 over the month, to stand at 1,957,700 in September 2019, but is 18,700 (or 1.0 per cent) higher than it was a year ago.
- The level of **youth unemployment** fell by 600 in September 2019, to 258,800, but is 9,000 (or 3.6 per cent) above the level recorded 12 months ago.
- The **youth unemployment rate** was unchanged over the month, at 11.7 per cent in September 2019, but is above the 11.5 per cent recorded in September 2018.

Chart 5 – Youth and total unemployment rate



STATES AND TERRITORIES

Table 7 – Selected State and Territory indicators

	Employment ('000)		Participation rate (%)	
	Sep-19	Monthly change	Sep-19	Annual change
New South Wales	4,139.6	-23.0	65.6	0.7 pts
Victoria	3,424.1	8.6	66.3	0.6 pts
Queensland	2,554.2	25.3	66.5	1.1 pts
South Australia	855.6	1.5	63.3	1.2 pts
Western Australia	1,354.1	-5.9	68.1	-0.5 pts
Tasmania	250.9	2.2	60.5	0.1 pts
Northern Territory*	130.5	0.4	73.3	-1.1 pts
ACT*	235.0	1.1	71.3	1.1 pts

- Queensland recorded the largest increase in **employment** of all States and Territories in September 2019 (up by 25,300), followed by Victoria (up by 8,600). New South Wales recorded the largest fall in employment (down by 23,000), followed by Western Australia (down by 5,900).
- Queensland recorded the highest **unemployment rate** of all States and Territories, of 6.5 per cent in September 2019, while the Australian Capital Territory recorded the lowest unemployment rate of 3.5 per cent.

Chart 6 – State and Territory unemployment rates



*Please note that all data are in *seasonally adjusted* terms, with the exception of the ACT and the Northern Territory, which are in *trend* terms.

- The Northern Territory recorded the highest **participation rate**, of 73.3 per cent in September 2019, while Tasmania recorded the lowest participation rate, of 60.5 per cent.

UNDEREMPLOYMENT

Table 8 – Underemployment ('000)

	Sep-19	Change over the month	Change over the year
Persons	1,139.7	-2.1%	3.1%
Male	491.4	-1.6%	10.4%
Female	648.3	-2.5%	-1.8%

- The level of **underemployment** decreased by 24,600 over the month, to stand at 1,139,700 in September 2019, but is 34,100 (or 3.1 per cent) above the level recorded a year ago.
- The **underemployment rate** fell by 0.2 percentage points in September 2019, to 8.3 per cent, but is equal to the rate recorded a year ago.
- The **male underemployment rate** declined by 0.1 percentage points over the month, to 6.8 per cent in September 2019, but remains above the 6.3 per cent recorded a year ago.
- The **female underemployment rate** decreased by 0.3 percentage points over the month, to 10.1 per cent in September 2019, and is 0.5 percentage points below the rate recorded 12 months ago.

Chart 7 – Underemployment rate by gender (%)

